

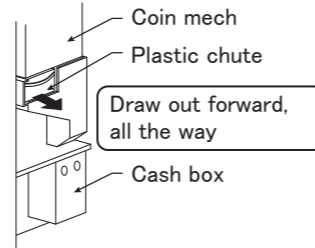
Collect cash

Cash box

Inserted cash will be collected in the cash box.
Please collect the cash at occasions when loading the product.

How to collect change

- 1) Draw out the plastic chute located below the coin mech forward.
- 2) Push the coin payout button on the coin mech.
- 3) All changes will be collected in the cash box.
NOTE) Few coins may remain inside the coin mech depending on the coin mech model.
- 4) Return the plastic chute to original position.



Stock coin before use

Particular type of coin-mech may require security stock of coins in every coin tube.
If necessary amount of coin is not stocked, coin-mech may not be able to payout the coins correctly.
Please store appropriate number of security stock according to instruction by the coin-mech manufacturer before use.
For example, certain coin-mech may require at least 4 coins in stock for each tube, but least amount of required security stock depends on the coin-mech model.

Test vending

Tests to confirm the vender functioning correctly.

Test vend

- 1) Insert coins.
- 2) Push selection button.
- 3) Check for correct product and change returned.

Specifications

Model	KB-GS20	
Dimensions	Width 999mm * Depth 733(66+667)mm * Height 1846mm	
Empty weight	Approximately 235kg	
Lighting	LED lamp * 4	
Required rear clearance	At least 50mm	
Power requirements	Rated voltage	AC220-240V Connect to an exclusive outlet with rated current exceeding 10A
	Rated frequency	50Hz
Power consumption	665W at AC230V	
Vending system	Vending mechanism	5 rows serpentine stockers (solenoid operated)
	Supported products	Indicated in the "Loading Capacity" label
	Selections	20 selections (20 selection buttons)
Heating / cooling	Refrigeration unit	Compressor: Reciprocating compressor Refrigerant: R134a Temperature adjustment: Automatic
	Heating unit	Heater : sheath heater Temperature adjustment: Automatic Overheat prevention device equipped

- Modification may occur without prior notice.

Warranty

- In case of trouble occurrence within guarantee period under proper operating condition, please contact the service technician, and PT.METEC SEMARANG will be responsible for a free repair.
 - 1) Follow instructions in the manual for correct installation, operation, care and maintenance.
 - 2) Do not modify, process, or relocate the vender without noticing the manufacturer.
 - 3) Please replace the expendables at your own responsibility.
- Cases as in below will not be covered by this warranty.
 - 1) Troubles occurring from improper operation.
 - 2) Damages caused by fire, vandalism, or natural disasters.
 - 3) Machines that have expired the guarantee period.
- Loss of products and cash due to deterioration, damage, deformation, vandalism are not covered by this warranty.

KUBOTA Vending Machine

Operation Manual

KB-GS20

Kubota

Read before using. Keep it forever.

Thank you for choosing KUBOTA vending machine.
This manual guides through correct operation of the vender.
Please read this manual in entirety beforehand, and follow its instructions.
Adding to this "Operation Manual", there are "Safety Manual" and "Keyboard Operation Manual". Read all manuals before using.
Do not discard this manual after reading, and refer back to it if there is anything uncertain with the operation.

Index

Installation	1	Replacing the sample products	3
Part description	2	Collect cash	4
Operating the doors	2	Stock coin before use	4
Connect to power supply	3	Test vending	4
Loading products	3	Specifications	4

Installation

Installing the vender is the basic step for correct and safe operation. Instructions hereunder must be complied.

WARNING

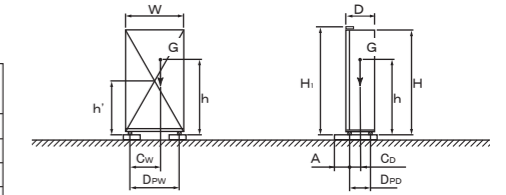
- Installing, moving, or relocating of the vender must be performed by qualified personnel. Please contact a vending machine locating service or your dealer.
- Comply local laws and regulations when installing the vender. Illegal or improper installation may result in fall over accidents, electric shock, fire hazard, burning, or water leakage.
- Unpack the vender on a leveled platform. Vender may tip over when unpacked on a tilted surface.
- Please be careful when opening the door before anchoring. The machine may tip over.

Installment requirements

	Unit	Empty	Fully loaded
G : Weight	kg	235	405
h : Height of the center of gravity	mm	909	1058
CD : Distance from the center of gravity to center of the front legs	mm	291	315
CW : Distance from the center of gravity to center of the left side legs	mm	495	504
DPD : Distance between front and rear legs	mm	602	
DPW : Distance between left and right legs	mm	961	
h' : Height of the center	mm	925	
H * W * D : Exterior dimension	mm	1846 * 999 * 733	
H1 : Height including projections	mm	1846	

	"A" length	Anchoring plate model
Ground floor A1=0.5h-C	214	900
First floor and above A2=0.86h-C	595	1300
Highest floor, or on the roof Au=2h-C	1801	

- C is calculated as an A length when tipping over forward. In case tipping over sideways or backward is predicted, either calculate their A length separately, or contact us.
- Please refer to the Installment Requirement Manual for the symbol of the anchoring plate model.



- "A", "h", "h'" is based on when maximum height "H" = 1896mm. Weight when fully loaded is that of when loaded with product of maximum mass. When leveling screws are lowered or utilization of anchoring plate (counter mass) will improve the center of gravity height, therefore requires recalculation. "A" length must be recalculated to meet the actual conditions for proper installment.
- If in case when improving the "A" length by placing a counter weight inside the vender, beware of tipping forward when the door is open.

*below specifications are of fully loaded condition as in chart above

Required fixation (estimated pulling force on the ground surface which may apply on the legs during an earthquake)	
Rear legs (measure for tipping forward)	<ul style="list-style-type: none"> ● fixing clamp : type E two pieces (pulling strength → single piece : 1130 [N], two pieces 565 [N]) ● M10 anchor : two pieces → minimum rim clearance 40mm ● M12 anchor : two pieces → minimum rim clearance 50mm (pulling strength → single piece : 2260 [N], two pieces : 1130 [N])
Front legs (measure for tipping backward)	<ul style="list-style-type: none"> ● fixing clamp : type E two pieces (pulling strength → single piece : 1273 [N], two pieces 637 [N]) ● M10 anchor : two pieces → minimum rim clearance 40mm ● M12 anchor : two pieces → minimum rim clearance 50mm (pulling strength → single piece : 2547 [N], two pieces : 1273 [N])

Location

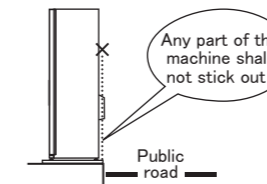
Please be aware of following:
● Any part of the machine shall not stick out on the public road.

Please consult the dealer if locating the vender in following locations:

- High exposure to salt breeze or corrosive gas
- Great amount of shakes and vibrations.

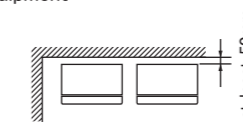
Please consult the local fire department if locating the vender in following locations:

- Near a fire protective device
- Places which use flammable substances or gas
- Petrol station ● Evacuation routes or equipment



Required space

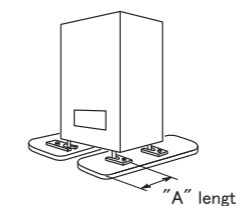
Make sure there is enough space to open the front door for loading. Vender also needs clearance for adequate air flow for the condensing unit in order to perform effectively.



Indoor locations

Please use anchoring plate in locations where anchoring is not possible. Refer to the Installment requirements for anchoring plate models and "A" length.

If it is impossible to secure enough "A" length, please apply additional fixation.



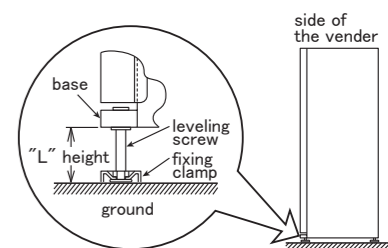
Outdoor locations

Vender must be secured on **all four corners** by an anchor or cramps to avoid tipping over.

Installing the vender

Leveling adjustment

Turn the leveling screw to adjust the tilt of the vender to within 1 degrees for both lateral and horizontal direction. Also, the "L" height must be within 86mm for safety.



*"L" height is the gap between the base of the vender to the ground.

CAUTION

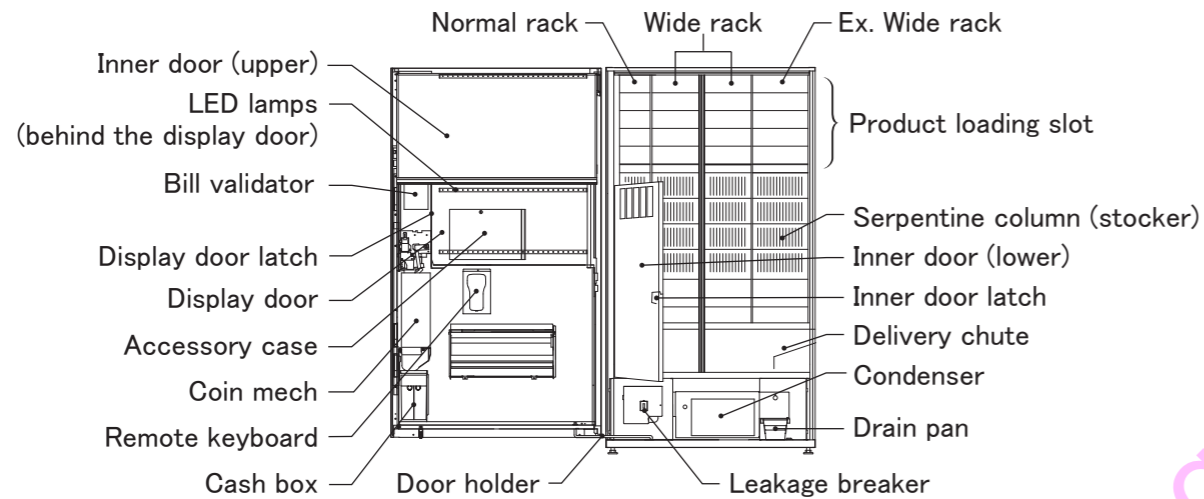
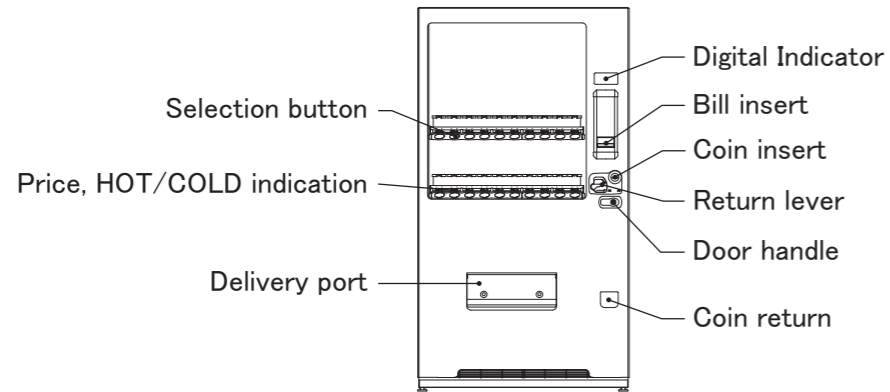
Inspect brackets periodically for proper installation. Please contact the service technician or your dealer if there is anything wrong. Operation under improper installation may result in fall over accident.

Installation

Grounding

- Grounding is necessary to prevent electric shock in case of electric leakage. Always Ground the vender properly.

Part description

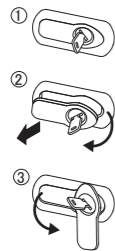


Operating the doors

Opening and closing the door

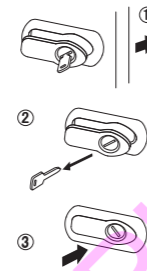
How to Open the door

- 1) Insert the key into the keyhole.
- 2) Turn key to the right, and the door handle will pop out.
- 3) Turn the door handle counterclockwise to open the door.



How to close the door

- 1) Close the door.
- 2) Remove the key.
- 3) Press the door lever until it locks.
- 4) Make sure the door is locked completely.



Holding the door

To hold the door open, hook the door holder latch into one of the slots in the rail.

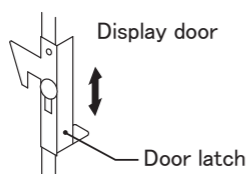


CAUTION	
!	Always use the door holder when the door is open. ● Strong wind may cause the door to close unexpectedly, and cause injury.

Opening and closing the display door

How to open the display door

- 1) Slide the door latch upward to open the door.

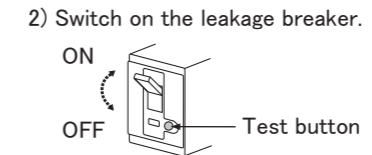


How to close the display door

- 1) Press the display door against the front door, and the latch will lock automatically.
- 2) Make sure the display door is locked completely.

Connect to power supply

- 1) Connect the power supply plug to a power outlet. Make sure it is plugged in all the way.



- 2) Switch on the leakage breaker.
- 3) "Sold out" and lamps will turn on.

CAUTION	
!	Voltage drop may cause malfunction. Connect power plug directly to the power outlet. Do not use extension cords and multiple outlets.

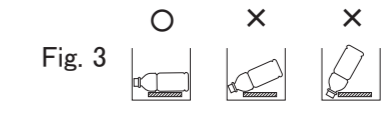
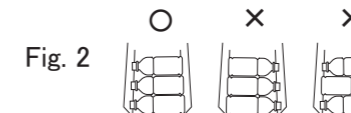
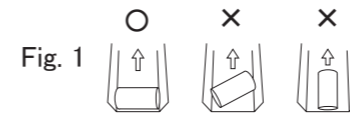
WARNING	
!	Do not handle the power plug and switches with a wet hand. ● May cause electric shock.

CAUTION	
!	Clean the power plug occasionally, and make sure that it is plugged in all the way. ● May cause fire if dust piles up on the connection point.

CAUTION	
!	Inspect the leakage breaker at least once a month that it is functioning correctly. ● May cause electric shock if it is not functioning correctly.

Loading products

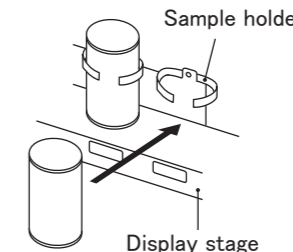
- Ejection guide of the front and second stockers are adjustable. (Normal and Wide racks only. Ex. Wide racks have fixed ejection guide.) Please check the position before loading.
- Product loading slot must be adjusted depending on the product. Please refer to "How to set up the stocker" label for corresponding setting.
- Insert the product horizontally to the loading slot. (Fig. 1)
- PET bottles must be inserted with the cap facing left. PET bottles are better sold in front side columns. (Fig. 2)
- Confirm that the first product has been loaded properly before installing the next product. (Fig. 3)
- Fill out the product name label to verify the product loaded in each stocker.



Replacing the sample products

How to replace the product sample

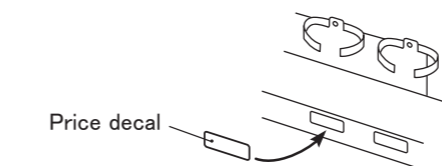
- 1) Open the display door.
- 2) Attach the sample product to the sample holder.
IMPORTANT
Use only empty containers for display.
- 3) Display stage could be removed by tumbling it forward while lifting up.
- 4) Rewrite the product name label when replacing with a new product.



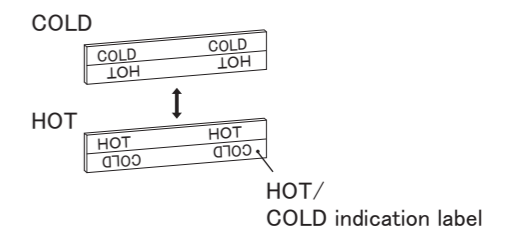
CAUTION	
!	Use empty container for display. ● Container may explode due to rise in temperature and cause injury.

Changing the price and HOT/COLD indication

- 1) Attach the price decal horizontally to the frame.



- 2) Change HOT/COLD indication to match the setting. (Indication on the lower side will be shown.)



- ※ Price settings are performed using remote keyboard. Refer to the keyboard operation manual for operation.